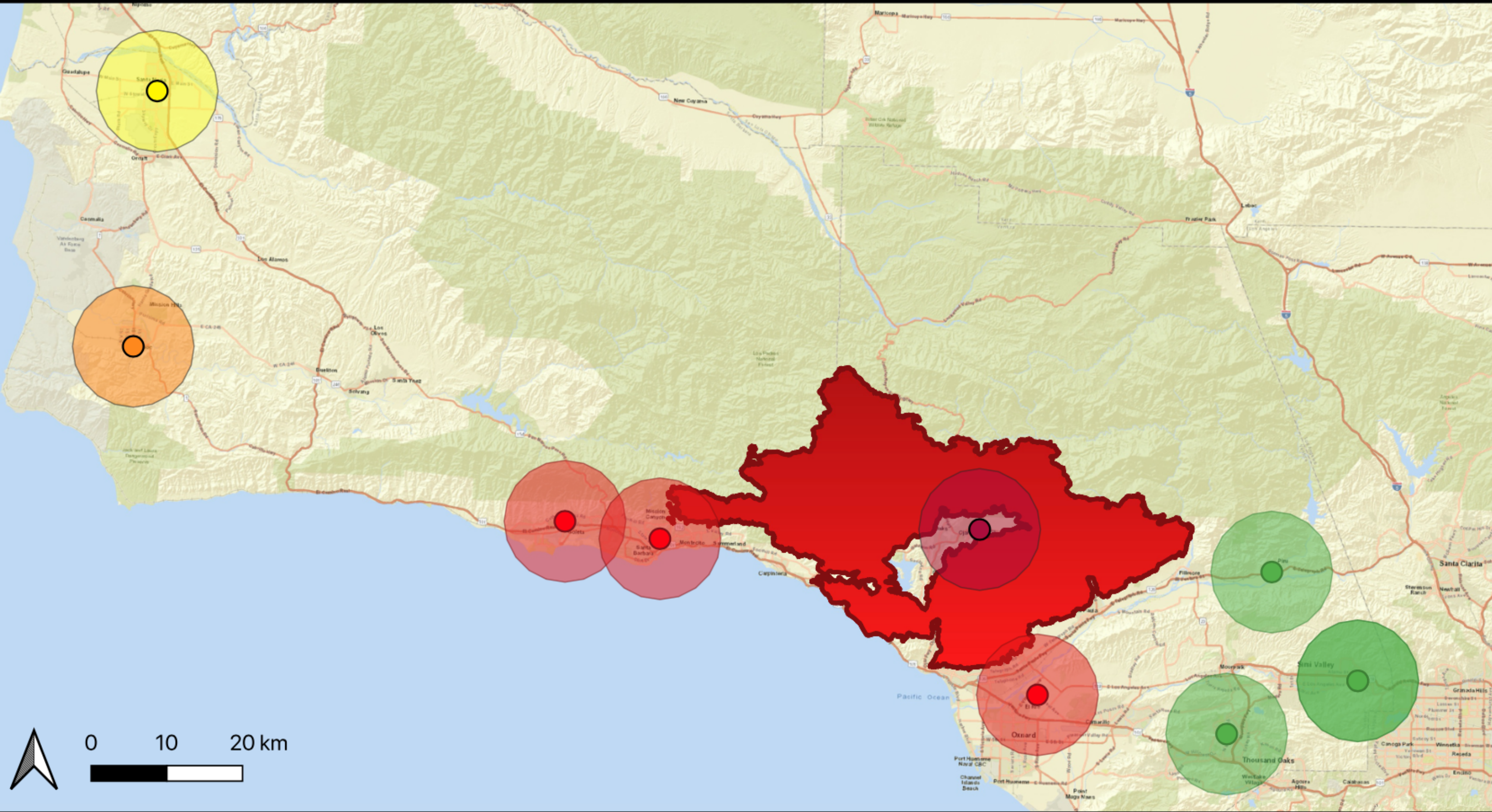


# Fine Particulate Matter (PM2.5) Monitoring During the Thomas Fire

Datum: WGS 84 / UTM Zone 11N

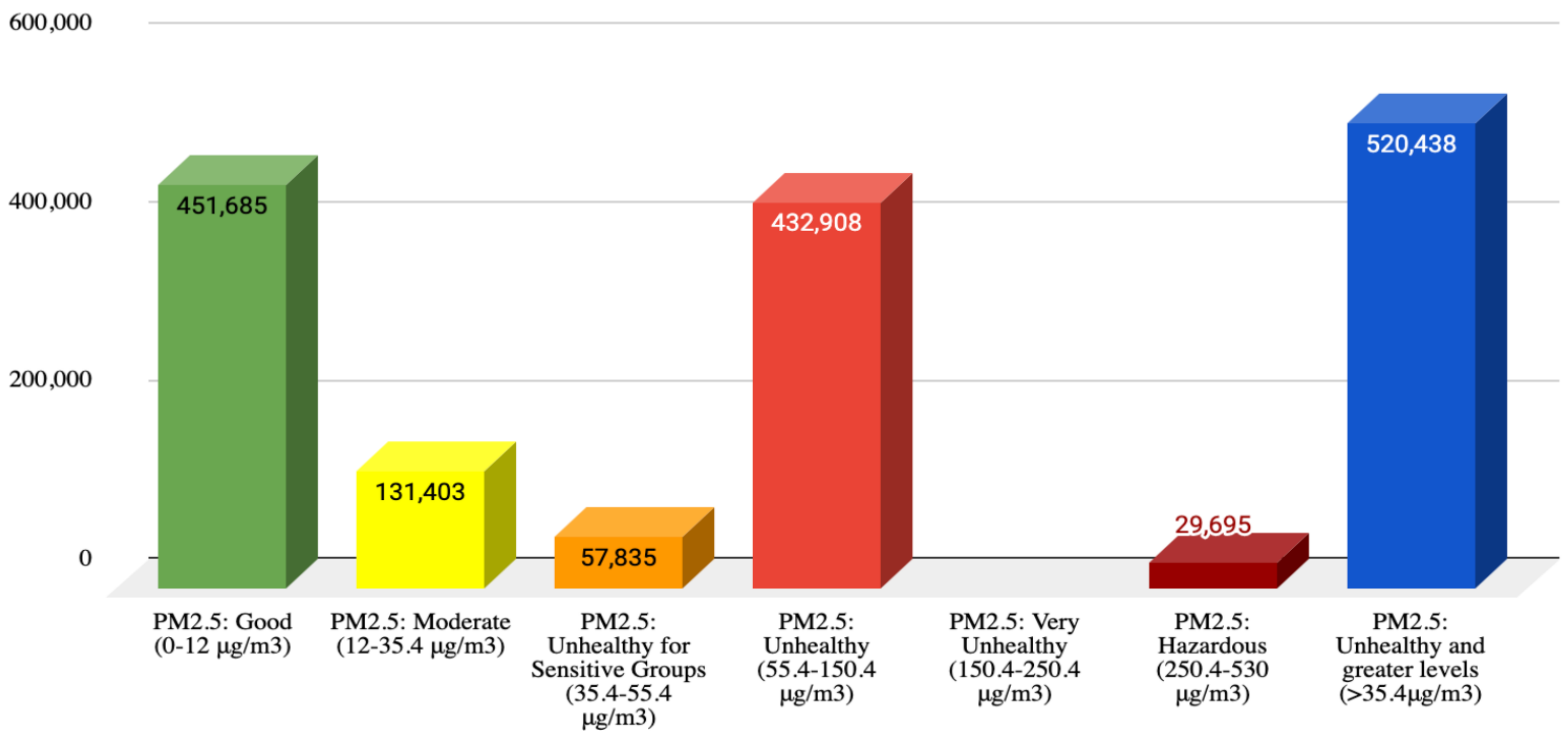
Samples taken on December 8, 2017



EPA Air Quality Monitoring Stations

- PM2.5 - Good
- PM2.5 - Unhealthy
- Thomas Fire Perimeter
- PM2.5 - Moderate
- PM2.5 - Very Unhealthy
- PM2.5 - Unhealthy for Sensitive Groups
- PM2.5 - Hazardous

*People Exposed to Different Levels of PM2.5 during the Thomas Fire in SB & Ventura Counties*



Identifying where fires are, how a fire's air particulates travel throughout the atmosphere, and the concentration of PM2.5 is crucial in helping public health officials navigate how to protect human populations from inhaling harmful levels of fire smoke.